

4 DIFFERENT TYPES AND PRICES

There's One to Suit YOU!

*Monthly
Carrying
Charges*

*Min.
D.P.*

- 55⁰⁰* 2 BEDROOMS *25 1/2 yr. Mths.* . . . \$7995 *1045*
- 60⁰⁰* 2 BEDROOMS *25 1/2 yr. Mths.* AND EXPANDABLE ATTIC \$9250 *1650*
- 55⁰⁰* 3 BEDROOMS *30 yr. Mths.* (36 FT. HOUSE) . . . \$8795 *1195*
- 55⁰⁰* 3 BEDROOMS *30 yr. Mths.* (38 FT. HOUSE) . . . \$9250 *1650*

*Less 4⁰⁰
per month
on Taxes
for Vets*

All the homes have a large unfinished second floor with fold-a-way stairway . . . ideal for storage.

4 1/4% F H A FINANCING *Deposits*
No V.A. Financing

*plus
300⁰⁰
Settling*

PRICE	\$
MORTGAGE	\$
DOWN PAYMENT	\$
MONTHLY CARRYING CHARGES	
Interest & Principal	\$
Taxes (approx.)	\$
Fire Insurance	\$
TOTAL MONTHLY COST	\$
Average monthly saving	\$
NET MONTHLY COST	\$

ALDEN PARK

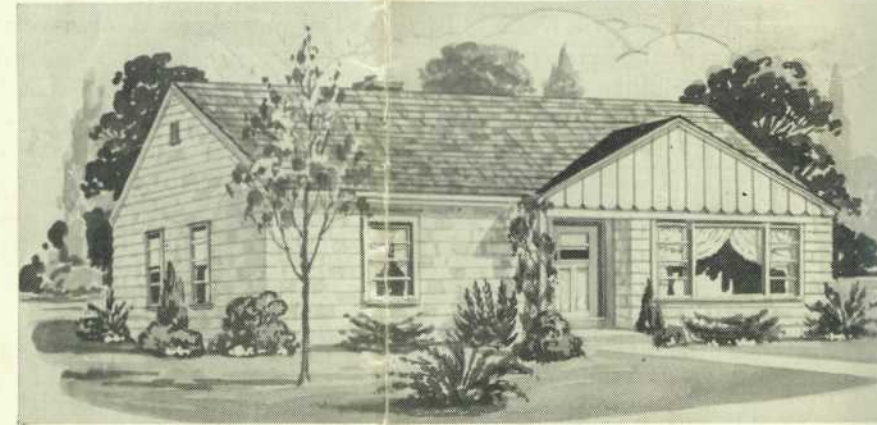
MAPLE SHADE CONSTRUCTION CO.
MERCHANTVILLE 8-9353

ALDEN PARK

A NEW PLANNED COMMUNITY OF 500 SINGLE HOMES

MAPLE SHADE, N. J.
ON MOORESTOWN PIKE BETWEEN
MERCHANTVILLE AND MOORESTOWN

15 Minutes to Central Philadelphia
8 Minutes to Tacony-Palmyra Bridge



Homes with gable fronts slightly higher in price

Ranch Type Homes

- MANY BEAUTIFUL EXTERIOR DESIGNS
- FOUR DIFFERENT FLOOR PLANS
- TWO OR THREE BEDROOMS
- LARGE LOTS, NONE SMALLER THAN 60' x 110'

\$7995

Others at \$8795 and \$9250

RECORD-BREAKING VALUE ● CAN'T BE DUPLICATED

★ *Select Your Home NOW in
America's Model Community*

ALDEN PARK

MAPLE SHADE, N. J.

ON MOORESTOWN PIKE BETWEEN
MERCHANTVILLE AND MOORESTOWN

Here you'll find EVERYTHING you've ever dreamed of having in your ideal home community. A lovely, high location where every member of the family will enjoy the manifold advantages of suburban living . . . close to the city, convenient to everything.

★ **15 MINUTES DRIVE TO CENTRAL PHILA.
8 MINUTES TO TACONY-PALMYRA BRIDGE**

Wide, through boulevards in all directions.
One hour to seashore.

★ **SEWER AND ALL CITY IMPROVEMENTS**

No septic tanks . . . regular city sewer.
Finest, clear, sparkling artesian well water.
Gas and electricity.

★ **WIDE, SAFE, PAVED STREETS**

Room to park on both sides, and leave plenty of space for driving.
Wide sidewalks and curbs. (No need to walk in the street).
Streets deliberately curved to prevent speeding . . . making the community safe for your children.

★ **UNEXCELLED CONVENIENCE**

3 busses at your door . . . taking you swiftly to central Phila. or Camden.

Adjacent to a fully developed community.
Regular police and fire protection . . . garbage and trash collection.
Easy walking distance to complete shopping section and movies.
Close to modern public and parochial schools.
Churches of all denominations nearby.

★ **EVERYTHING OF HIGHEST QUALITY**

We urge you to study carefully the sturdy construction and quality features embodied in these homes . . . and COMPARE! Then you will fully appreciate the tremendous value offered here.

★ **FEATURES INCLUDED IN ALL THE HOMES**

Lovely, unusually large living room.
Beautiful, modern, picture window.
Very large kitchen with plenty of light and ventilation.
Exceptional number of big, roomy custom-built kitchen cabinets.
Work table with formica top.
Electric exhaust fan.
Youngstown cabinet sink with combination laundry tray.
Large, 36 in. modern, console-type gas range.
Heavy inlaid linoleum kitchen floor.
All full sized bedrooms (choice of 2 or 3).
Large, real ceramic colored tile bathroom with shower over tub.
Finest gas fired, winter air-conditioning, warm air heat with humidifier.
Automatic gas hot water heater (30 gallon capacity).
Unusually large number of big closets with new, modern sliding doors.
Utility room.
Hardwood floors.
Concrete foundations.
Side walls in various colors of fireproof heavy asbestos shingles.
Asbestos shingle roof in color to blend harmoniously with side walls.
Ceiling insulated with rock wool.
Side walls specially designed with rigid insulation.
All windows and doors weather-stripped.
Copper water pipes throughout.
Large paved driveway for off-street parking.
Lots 60' x 110' and larger, attractively landscaped.
Fold-away stairway to large second floor, where there is plenty of space to store trunks, unused household furniture, suit cases and other articles. (A feature every woman will appreciate).